

eTELEMET

**Real-Time and Historic
Market Data, Charts, News,
Research and Portfolio Analytics**

TipSheets V7.x

**By Telemet America, Inc.
325 First Street
Alexandria, Virginia 22314**

Providing market data and news for a quarter century

Introductory Note

Welcome to Telemet's TipSheets.

These handy reference pages offer an overview of just some of the data available on Telemet Orion.

First a couple of concepts.

See any and all displays with the "Display" menu. It is in the upper left corner. Select a display menu item listed creates a window. This window shows market data, news, charts, research and portfolio management information.

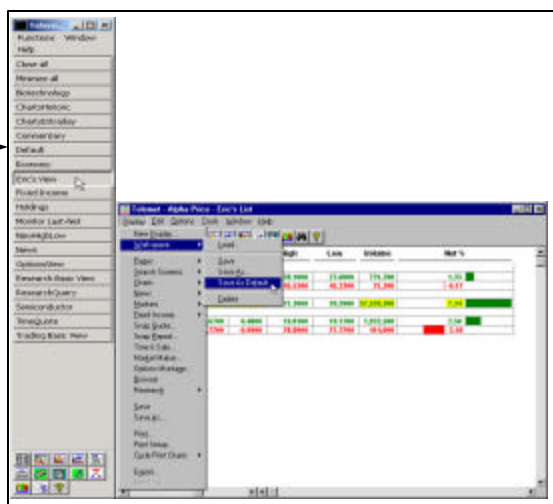
Click on "Display" to see a list of possible selections. .



Several windows together are a "Workspace". Telemet created several "workspaces" and included these in your platform. A series of tabs show these "workspaces". Modify these, or add to them. Here's how:

☞ To see any "Workspace", click on a **Tab** in the Telemet Manager (on the left side of your screen). See a layout of windows for that "Workspace". Sample these to see possible layouts.

Click on any **Tab** to see that Workspace.



☞ To create a new Workspace, open several windows (as mentioned above) and arrange them. Then select the menu item **Display / Workspace / Save As...** . Give it a title and the title appears on the tab. Create and save as many Workspaces as you want.

☞ To make a default or "start up" Workspace. Select the workspace for the default. Select the menu item **Display / Workspace / Save as Default** - This workspace becomes the default or "startup" Workspace.

TipSheet Contents

Market Data

1. **Market & Industry Summaries**
2. **Snap Quote**
3. **Snap Report**
4. **Custom Ticker Lists**
5. **Data Columns & Sorting**
6. **The Ticker Tape**
7. **Limit Alerts**
8. **Spreadsheet Links**
9. **Fixed Income Overview**
10. **Time & Sale and Time & Quote**
11. **Options Montage and Analytics**

Charts

12. **Historic Price Charts**
13. **Chart ticker vrs ticker**
14. **Chart ticker vrs revenue, dividends, p/e**
15. **Technical Studies**
16. **Intraday Charts**

News

17. **Retrieving News**
18. **News on a ticker list or portfolio**
19. **News on subjects, regions or key words**

Research


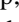

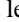
20. **Fundamental Data and Alerts**
21. **Search and Screen**
22. **Corporate Actions, Split and Dividend histories**
23. **Third Party Services**
24. **The Report Writer**

Portfolio Management

25. **Dollar Impact**
26. **Balance & Rebalance**
27. **Attribution**
28. **Performance Charts and Holdings**

See **Market and Industry activity at-a-glance.**

Choose the menu item **Display / Markets / NYSE / Most % Up** from a Telemet window. See the NYSE's Most % Up.

See different market summaries by using the up () and down () arrow keys or point and click on the tabs. Move among the Most % Up, Most % Down and Most Active tabs by using the right () and left () arrow keys or point or click on the tabs.

See different market summaries by using the arrow keys or clicking on the tabs.

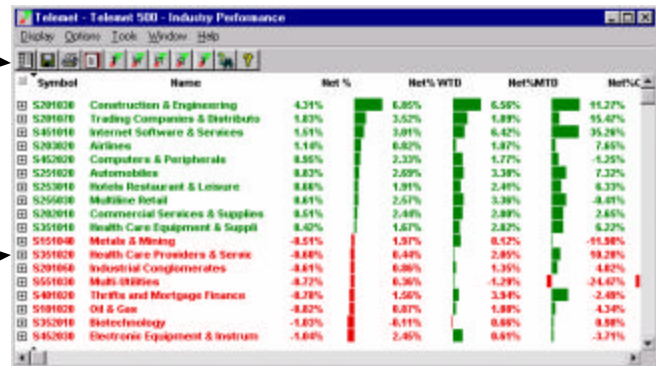


See **Industries top 10 most moving up or down for the day, week, month, quarter and year.**


Choose the menu item **Display / Markets/ Industry Performance** from a Telemet window.

See different summaries for DTD, WTD, MTD, QTD and YTD by clicking on the tabs.

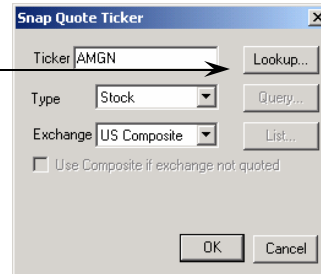
See the stocks that make up the industry and each's performance by clicking on the "+".



See real-time and fundamental data on any single company.

Click on the Snap Quote tool  from any Telemet window. See a “dialogue box”. Type in the ticker for a stock, option, fund, future or index. If you want an index, change the **Type** field to “**T**”. Use the tab key followed by the letter I.

If you don't know the symbol, look up a symbol by name with the “lookup” button. Then type in the first few letters of the company's name.



Or

Choose **Display / Snap Quote...** from a Telemet window.

Or

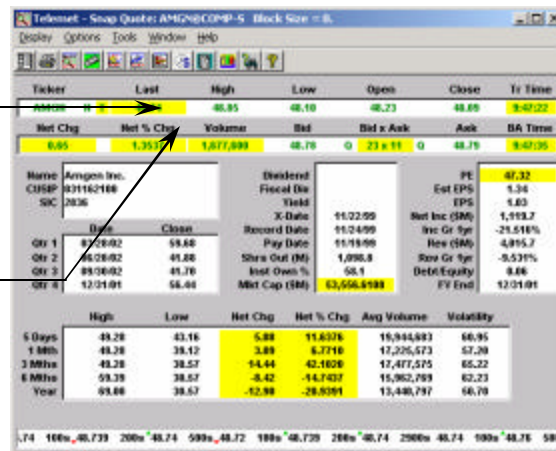
Fast - From any Telemet display press the **F5** key.

See a Snap Quote on a different symbol? Type in the new symbol and press **Enter**.

See **Time & Sale**? Double click on the capital **T**. View **Snap News**? Double click on the **N**. See a chart? Press **F8**.

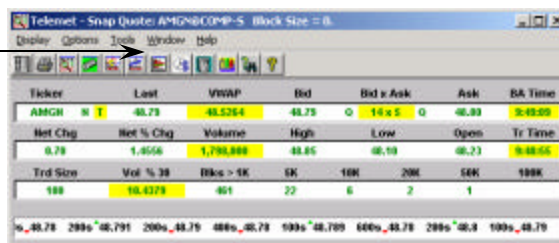
Double click on the N to display Snap News on that company.

Double click on the T to display Time & Sale – all the trades of the day.



Want a smaller window? Choose **Options / Stock - Short View** or **Tiny View** to see a **Snap Quote Short View** or **Tiny View**. Want a Scrolling Block Tape? Choose **Options / Tape / Display....**

Select menu Options / Stock Short View



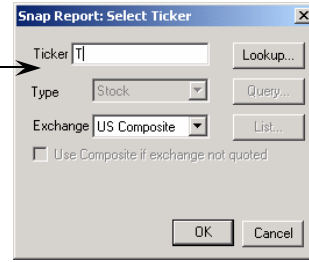
Select menu Options / Stock Tiny View



✍ A Snap Report is a handy “one-pager” on any company.

✍ Click on the Snap Report tool  to display a Snap Report. See a dialogue box. Type in the symbol and press **Enter**.

Type in the symbol and press Enter.



Or

Choose menu item **Display / Snap Report...**

Or

From any Telemet display press the **F11** key.

To see Snap Report on another company, type the new symbol and press **Enter**.

A company synopsis is updated weekly.

An historical chart with dynamic updates and zoom in to see

Data columns on peer companies are customizable, click on column heading to change the data shown

BRIEF: AT&T provides voice, data & video telecommunications services, including cellular telephone & Internet services, to businesses, consumers and government agencies. For the 6 months ended 06/02, revenues fell 10% to \$24.09B. Net loss applic. to Comm. from cont. ops. before acct. change & extra. items totaled \$12.91B, up from \$1.03B. Results reflect continued declines in the long distance voice business, \$16.48B of goodwill and franchise

Year	Hi Price	Low Price	Rev (\$M)	Net Inc (\$M)	Dividend	Yield	PE	X-Date	FY End	Volume	Rev Gr 1yr	Inc Gr 1yr	Debt/Equity	Shrs Out (M)	Mkt Cap (M)	Inst Own %	SIC
10/1/02	10/31/02		52,550	9,522	0.15	1.27%	4.72	09/26/02	12/31/01	2,133,900	-38.873	-317.381	6.78	3,649	43,094.69	48.8	4813
6 Months	19.99	8.19															
3 Months	15.00	8.19															
1 Month	13.78	8.19															
5 Days	13.78	10.45															
	12.14	10.45															

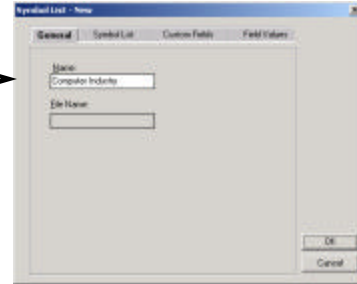
Symbol	PE Tr	4Q	Yield I	Last	Net	EPS FY	Mkt Cap	Name
VZ	247.50	4.44	34.65	-0.54	0.14	94,455.90	Verizon Communi	
SBC	10.37	4.88	22.10	-0.35	2.13	74,079.20	SBC Communicati	
BLS	9.94	3.43	23.28	-0.09	2.34	43,812.36	BellSouth Corp	
T	4.72	1.27	11.81	-0.16	2.50	43,094.69	AT&T Corporatio	
AT	12.68	3.15	43.14	-0.09	3.40	13,515.19	Alltel Corporat	

✍ Put together a list of client’s holdings, an industry and/or groups of indices. Create as many custom ticker lists as you desire.

✍ Choose the menu item **T**ools / **L**ist / **N**ew / **C**reate... A **S**ymbol List – **N**ew screen appears.

✍ Enter the list title in the **N**ame: field.

Enter the list title here.



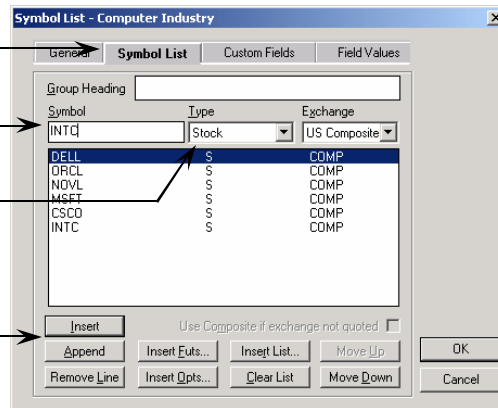
✍ Click on the **S**ymbol List tab. Enter ticker symbols in the **S**ymbol field. Click the **I**nsert button. See the ticker symbol on the list.

1. Select the **S**ymbol List tab

2. Type the symbol

3. Select the ticker **T**ype (if not a Stock).

Press the **I**nsert button or **E**nter key.

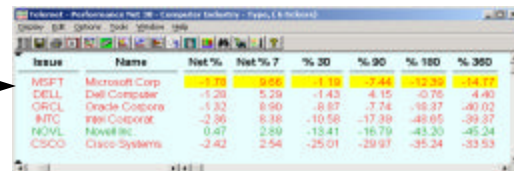


✍ When finished entering symbols, press the **O**K button.

✍ On a Custom Price page select lists by using the right (⌘) or left (⌘) arrow keys.

✍ To **edit** a ticker list on a price page, highlight where adding a new ticker, **right click** the mouse, select “Insert”.

Click on a ticker to highlight the row, **then right click** to enter or delete a symbol.



Hint 1: See totals for any column by double clicking on the column header. Select the item “total function” and then select the total function desired...see “sum”, “weighted by shares outstanding”, “average”, etc. and click “OK”

Hint 2: See the ticker list sorted by industry or sector, or both, select the menu **O**ptions / **G**roup...and select the group.

Hint 3: See group totals by selecting the menu **O**ptions / **G**roup Totals.

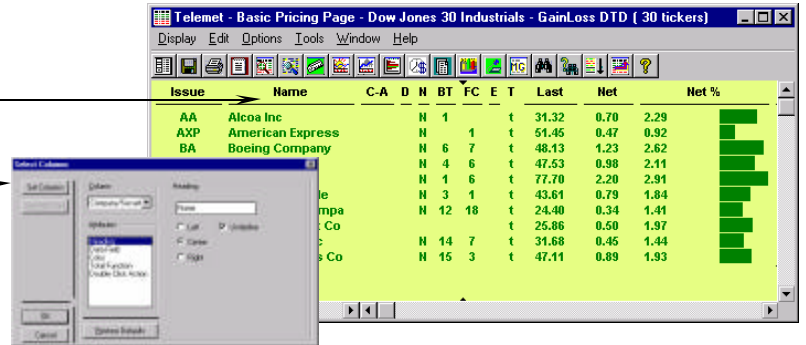
Hint 4: See on the left edge when grouping “-“ signs. Clicking on these signs collapses the group into a “heading only” with the totals shown. See the heading with a “+” sign. Clicking on the “+” sign re-expands the group.

See custom pages with fundamental, portfolio or performance data. Over 800 different data fields can be displayed on a Custom List Page. Sort on any column with the click of the mouse.

Adding a column. Double click on any column on a Custom Price page. A window appears. Press the “Set Columns” button on this window.

Double click on any column.

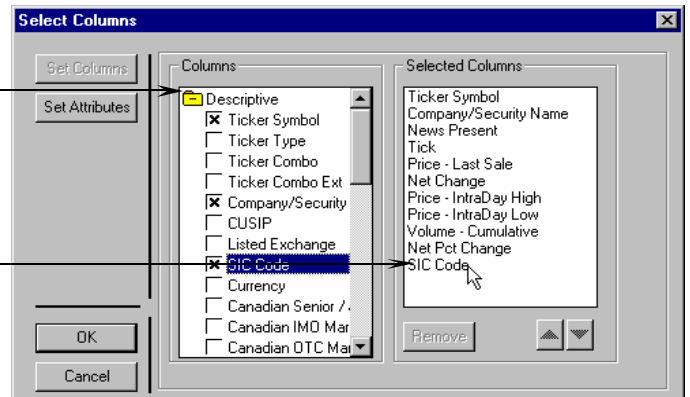
Press Set Columns



Select the column data field desired from the yellow folders in the center section of the **Select Columns** screen.

Click on a folder. Select the column desired. Point and click puts an “x” in the box.

Click on a data field. Move the column to its position using the **Up** and **Down** arrow buttons. The top item is the rightmost column.



Order the data fields right to left. Click on a data field in the **Selected Columns** list. Use the up and down arrow buttons (lower right) to arrange the order of the columns. The top most column is the right most data field.

Click on the **OK** button.. See the data fields on the Custom Price page in the positions selected.

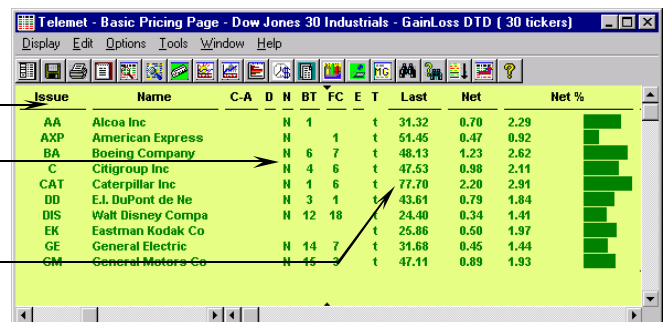
HINT: Move a column by “dragging it” to a new position. Point to the top of the column, hold down the mouse key until the column is highlighted, then with the mouse key held down, drag the pointer to a new location and release the mouse key.

Sort on any column with the click of the mouse.

Right click on a header to sort the ticker list by that column.

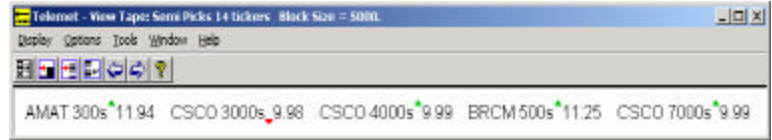
Double click on a “N” to see the




Double click on other columns to see charts, time & sales, Market Guide, etc..




✍ See a Ticker Tape with your favorite tickers.

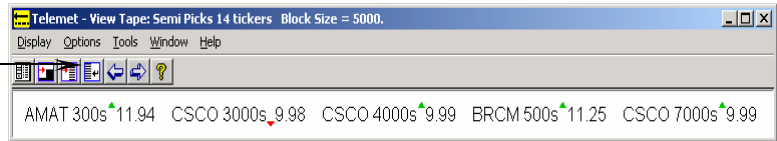
✍ Choose **Display / View Tape**. See a Scrolling Block Tape. See block trades on the tape for your ticker lists.



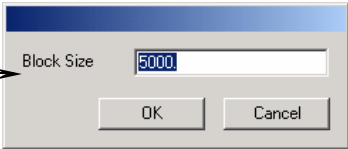
✍ Change the ticker list by clicking on the **Next Ticker List**  or the **Previous Ticker List**  tools. Or click on the  tool to select a list.

✍ See trades only of a certain size using the block filter. To change the block size click on the  tool or choose **Options / Block size...** from the menu. The tape displays then shows trades of that size or larger.

Choose Options /Block size...



*See the filter input screen.
Enter the block size. See only trades over a certain size*



✍ **Limits alert you when price or volume targets are reached.**

✍ Choose **Tools / Limits....** From the Limits window select **Criteria**.

The 'Limits' dialog box contains the following fields and options:

- SYMBOL:** A list of stock symbols with a pull-down menu for selection.
- LIMIT TYPE:** A drop-down menu with options like 'Last >=', 'Last <=', 'Positive Net Chg >=', etc.
- VALUE:** A numerical input field for the limit value.
- CRITERIA:** A text field for additional criteria.
- GROUP:** A text field for a reminder group name.
- Order:** Radio buttons for 'Symbol Name', 'Symbol Type', 'Limit Type', 'Group', and 'Creation Order'.
- Ticker List:** A pull-down menu for selecting a list.
- Symbol Type:** A pull-down menu (e.g., 'Stock').
- Exchange:** A pull-down menu (e.g., 'US Composite').
- Buttons:** 'Add', 'Delete', 'Cancel', 'Ok', and 'Help'.
- Checkbox:** 'Use Auto Limit Window'.

Callout boxes provide instructions for each field:

- Enter the ticker symbol in the **Symbol** field or a list.
- Use the drop down menu in the **Limit Type** field to choose the limit type.
- Enter the value of the Limit in the **Value** field.
- Enter the criteria if applicable. Such as Value is a percent of the high.
- Enter the ticker list name if a list was selected for the symbol.

✍ Enter the desired ticker symbol in the **Symbol** field or use the pull down menu and choose "Selected List".

✍ Use the drop down arrow in the **Limit Type** field to set up the type of Limit.

✍ Enter the value of the Limit to be set in the **Value** field. This can be a percent net change or the percent of a "High 360 day price" or the "Low of a 360 day price". The fifth line above shows an example that sets a limit alert when the stock price is >50 percent of the 360 day high .

✍ Enter, if desired, a reminder Group when the Limit "hits" in the **Group** field. When the limit "hits" the data entered in the Group field will be displayed in the pop-up alert

If you select a list for the limits, select the list name from the pull down menu.

✍ Click on the **OK** button to save changes when done.

✍ An alert "pops up" when the Limit "hits" .

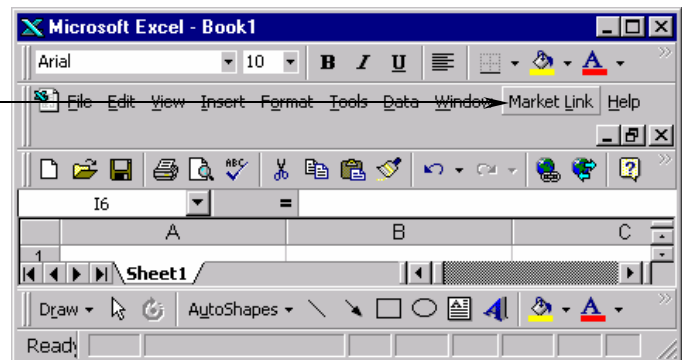
When the Limit "hits" the Limit "pops up" in a window like that shown here.

Time	Type	Symbol	Exch	Field	Value	Op	Limit
09:30:02	Stock	CSCO	COMP	LastPrice	17.25	>=	15.25
09:30:01	Stock	IITC	COMP	NetPctChg	0	>=	1.45

✍ Put real-time prices, p/e, market positions and sales figures from Telemet into MS Excel. Create custom presentations with up-to-date data. Market Link is installed automatically.

✍ Open a new worksheet in Microsoft Excel, then select the **Market Link / Field Data...** option to open the **Telemet DDE** window.

Select **Market Link** in your MS Excel program.



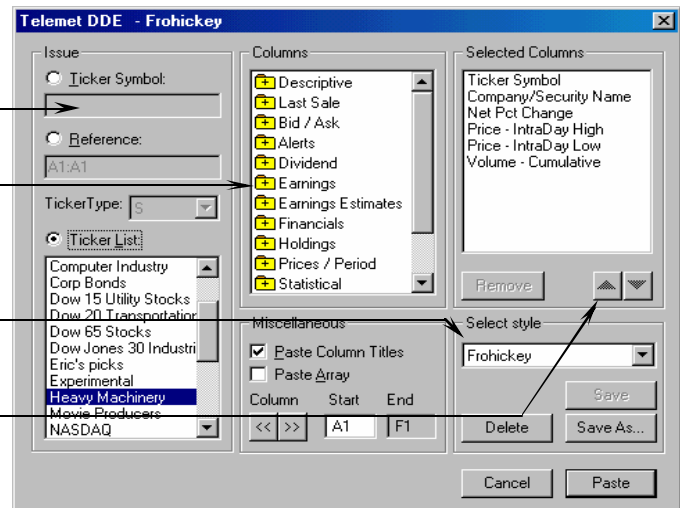
✍ On the left side of the Telemet DDE screen select **Ticker List** and click and highlight a ticker list.

Choose Ticker list to import or type in the symbols.

Click on a folders in the columns area to select fields.

Enter a title & click the **Save** button

Order the data fields using the up and down arrow buttons.



✍ Click on a folder from the **Columns** section. Add fields into the **Selected Columns** section. Change the field position using the up and down arrow buttons.

✍ Select the **Paste Column Titles** to put the column headings above the data fields.

✍ Click on **Save As...** button and enter a title. Data columns to be exported to the spreadsheet are saved for later recall.

✍ Click on the **Paste** button to create the link and paste data in to the spreadsheet. *Hint: Use menu item **Edit_Copy_Entire Page**, then paste it into a spreadsheet for a fast copy and paste with links from a custom price page to a spreadsheet!*

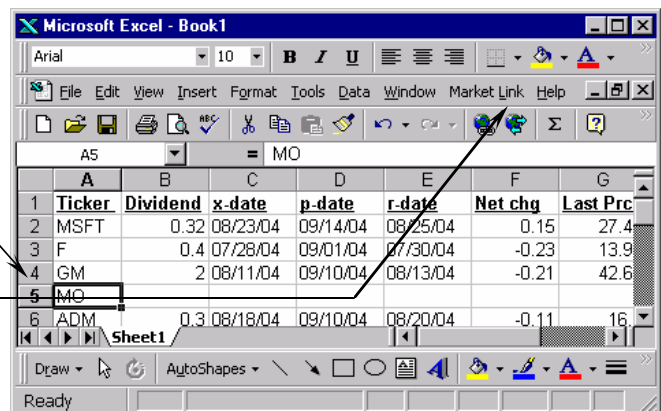
✍ Data in the spreadsheet update in real time!

Insert a new symbol with “Smart Paste”! Quickly and easily add a ticker and include all data & calculations. Just type the ticker.

Insert new row into spreadsheet

Type new symbol into row, here MO

Select menu **Market Link / Smart Paste** and data propagates for this new ticker.

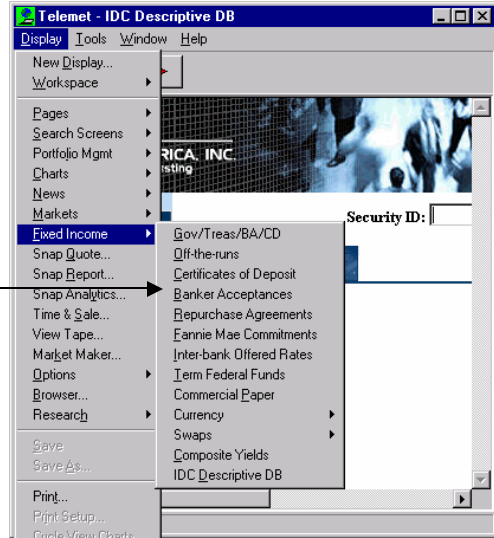




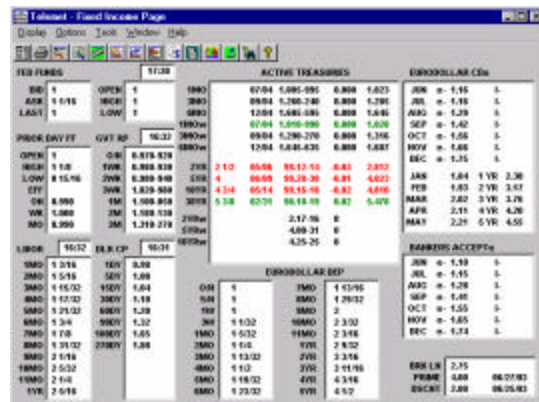
Telemet offers fingertip access to a variety of fixed income windows showing the on-the-run and off-the-run treasury markets,

Choose **Display / Fixed Income / ...** to see a list the fixed income offerings. These include treasury prices and yields, fed funds, CDs, Eurodollar deposits, repos, Fannie Mae commitments, commercial paper rates, composite yields and histories, and a wide variety of descriptive data on corporate and muni bonds. Access is by subscription. Please call Telemet for further information.

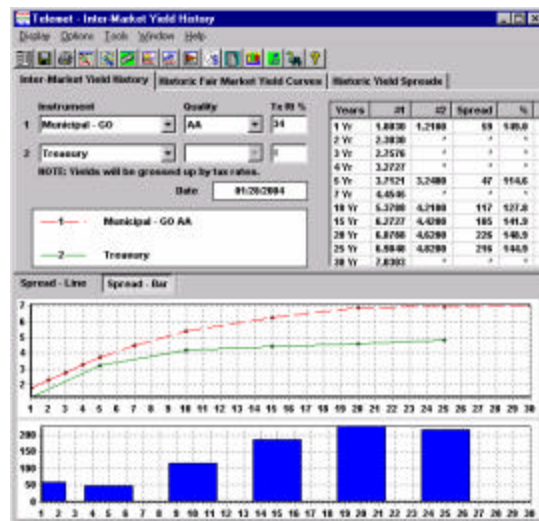
Select **Display / Fixed Income / ...** This shows fixed income data services. If "grayed out", access is not active on your platform. Call Telemet to activate



Selecting **..Gov/Treas/BA..** shows the popular fixed income summary page.



Selecting **..Composite Yields..** shows intermarket yield histories.



Selecting **..IDC Descriptive** offers lookups and searches across corporate and muni bonds. The data show evaluated prices, call provisions, ratings, and other data regarding any bond.

✍ To monitor execution, **Time & Sale** and **Time & Quote** show five-day's trading history.

✍ Choose **Display / Time and Sale...** from any Telemet window. Enter the symbol, press **Enter**.

Or

Click on the Time & Sale tool  from a Telemet window. Enter the symbol, press **Enter**.

Or


From a Custom Price page click on a ticker symbol, when the row is highlighted, press the **F10** key.

Or

Double click on the **T** in a Snap Quote window (see **TipSheet 2**).

✍ See Time & Sale data for prior days, use the drop down menu in the upper left of the window and select a date.

✍ Use the **Show Trades >=** to see trades of, or greater than, a certain size.

✍ Use the  tool to see Time & Quote. See every bid, offer, or size change as well as all trades.

Money Flow shows funds moving into or out of a stock.

Click on the drop down arrow to Time & Sale data for prior days.

See trades greater than a certain size by entering in the trade size.

Date	Show Trades >=	Money Flow Ticks	Start VWAP from	Stop VWAP at	Mode					
10/22/2002	0	75	9:00:00 AM	4:00:00 PM	T&S					
Time	Origin	Price	Trd Size	Bid	B/A Size	Ask	B/A Mkt	\$ Flow	VWAP	Cond
16:05:48	LCQS	13.06	200	13.00	300 x 1	13.08	P/X	0.417	12.9817	CSBSKT
16:04:22	LCQS	13.05	2,700	12.95	10 x 1	13.08	P/X	0.417	12.9817	CSBSKT
16:04:22	LCQS	13.05	2,000	12.95	10 x 1	13.08	P/X	0.418	12.9817	CSBSKT
16:04:21	LCQS	13.05	300	12.95	10 x 1	13.08	P/X	0.418	12.9817	CSBSKT
16:03:47	LCQS	13.05	500	12.95	10 x 1	13.08	P/X	0.406	12.9817	CSBSKT
16:02:01	NYSE	13.05	383,200	12.89	1 x 1	13.08	X/X	0.407	12.9817	
16:01:55	NYSE	13.05	107,100	12.89	1 x 1	13.08	X/X	0.483	12.9808	
16:01:26	NYSE	13.05	120,000	12.89	1 x 1	13.08	X/X	0.511	12.9806	
16:01:05	NYSE	13.05	12,500	12.89	1 x 1	13.08	X/X	0.545	12.9803	
16:00:55	NYSE	13.05	15,000	12.94	1 x 1	13.08	M/X	0.548	12.9802	
16:00:46	NYSE	13.05	364,000	12.90	1 x 1	13.08	M/X	0.553	12.9802	
16:00:07	NYSE	13.00	16,600	13.01	4 x 10	13.00	T/N	0.695	12.9793	
15:59:51	BOST	13.00	800	13.01	4 x 10	13.00	T/N	0.697	12.9793	
15:59:50	LCQS	13.08	100	13.07	1 x 500	13.13	P/N	0.697	12.9793	

✍ See **Time & Sale** data on another ticker, just enter the symbol and press **Enter**.


Click on the Q tool to see Time & Quote.

See all bids, offers, sizes as well as trades.

Date	Show Trades >=	Money Flow Ticks	Start VWAP from	Stop VWAP at	Mode				
06/09/2004	0	50	6:00:00 AM	6:00:00 PM	T&Q				
Time	Origin	Price	Trd Size	Bid	B/A Size	Ask	B/A Mkt	\$ Flow	Cond
10:05:45				16.78	53 x 83	16.79	N/N		
10:05:42	LCQS	16.7875	200	16.78	53 x 85	16.79	N/N	0.245	
10:05:31	NYSE	16.78	900	16.78	53 x 85	16.79	N/N	0.537	
10:05:31				16.78	53 x 85	16.79	N/N		
10:05:29	BOST	16.78	1,300	16.78	62 x 85	16.79	N/N	0.549	
10:05:26	NYSE	16.79	800	16.78	62 x 85	16.79	N/N	0.572	
10:05:26				16.78	62 x 85	16.79	N/N		
10:05:25	NYSE	16.78	100	16.78	62 x 93	16.79	N/N	0.563	
10:05:25				16.78	62 x 93	16.79	N/N		
10:05:22	NYSE	16.79	1,400	16.78	63 x 93	16.79	N/N	0.559	
10:05:22				16.78	63 x 93	16.79	N/N		
10:05:21				16.78	63 x 92	16.79	N/N		
10:05:21				16.78	63 x 106	16.79	N/N		

Time and Quote shows all the bids offers, size changes and trades.

Options Montage and Analytics show the Options market and a variety of buy-side and trade data.

Click on the Options Montage tool . Type in the ticker symbol and press the **Enter** key or click on **OK**.

Or

Choose **Display / Options / Montage...** from a Telemet window.



Market	Symbol	Last	Bid	Ask	Volume	Price	IMR %	APR %	BPY %	APY %	BPV	T Vol	Betta	Gamma	Vega	Theta	
C	OC14	11.00	10.00	12.00	11.25	17	0.0000	0.8794	-0.7902	0.8794	-0.7902	45.8100	17.36	1.0000	0.0000	0.0000	0.0000
C	OC15	10.00	9.00	11.00	9.75	17	0.0000	0.8794	-0.7902	0.8794	-0.7902	45.8100	17.36	1.0000	0.0000	0.0000	0.0000
C	OC16	9.00	8.00	10.00	8.75	17	0.0000	0.8794	-0.7902	0.8794	-0.7902	45.8100	17.36	1.0000	0.0000	0.0000	0.0000
C	OC17	8.00	7.00	9.00	7.75	17	0.0000	0.8794	-0.7902	0.8794	-0.7902	45.8100	17.36	1.0000	0.0000	0.0000	0.0000
C	OC18	7.00	6.00	8.00	6.75	17	0.0000	0.8794	-0.7902	0.8794	-0.7902	45.8100	17.36	1.0000	0.0000	0.0000	0.0000
C	OC19	6.00	5.00	7.00	5.75	17	0.0000	0.8794	-0.7902	0.8794	-0.7902	45.8100	17.36	1.0000	0.0000	0.0000	0.0000
C	OC20	5.00	4.00	6.00	4.75	17	0.0000	0.8794	-0.7902	0.8794	-0.7902	45.8100	17.36	1.0000	0.0000	0.0000	0.0000

Calls


Puts

Options montage showing both puts and calls.

To see only calls, select the menu **Options_Show Calls**. Select only puts, choose **Options_Show Puts**.

Select data columns by double clicking on the column name and using the standard method to enter a column (see TipSheet # 5). A host of analytic data is available to analyze options and their premiums. These data include the Premium, Downside Price Protection, Maximum Nominal % Return, Maximum Annual % Return, Nominal Premium Income %, Annual Premium Income %, Downside Profit Price, Maximum Downside Risk % and Protection Cost %.

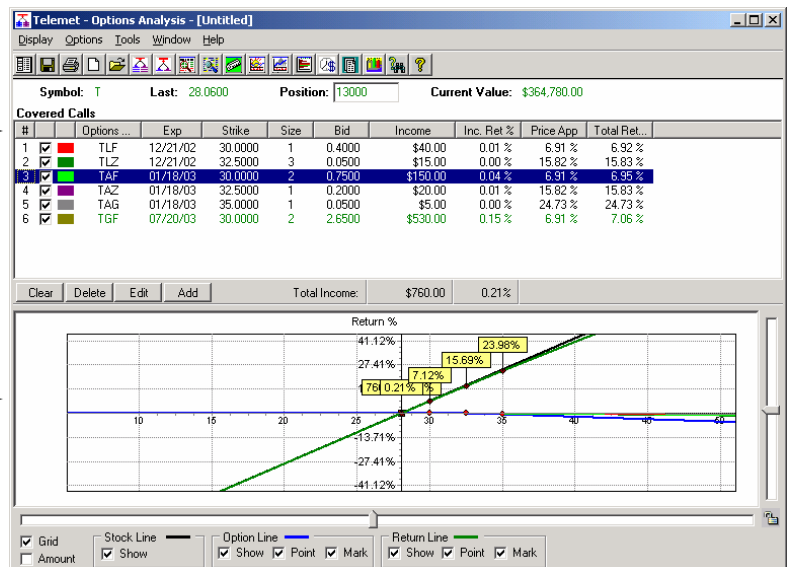
Traders and other options specialists will be happy to see the “Greeks”; Delta, Gamma, Vega, Theta, Rho, as well as Implied and Theoretical Volatility.

Click on the Options Analytics tool  from Options Montage. Enter the symbol and your position in the stock and press **Enter**.

To see the return by selling calls against the position, click on the **Add** button. See all the options being traded. Select one, enter the number of contracts to sell and press **Enter** (enter options if desired until you cover your entire position).

See the income and return from selling each of several calls

See the profit/loss line from selling the calls against the position.



TipSheet # 12

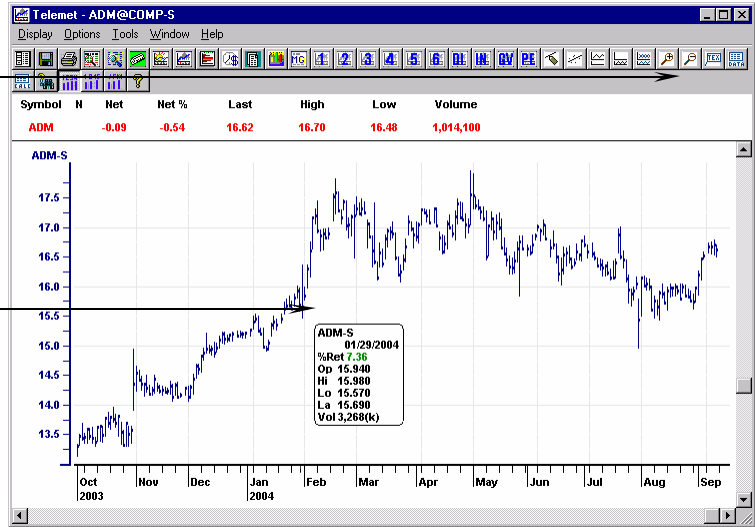
Historic Price Charts

See up to 10 years of daily, weekly or monthly price and volume data.

Click on a Historic Chart tool -  Or Choose **Display / Charts / Historical ...** from a Telemet window. Type in the symbol and press **Enter** Or press the **F8** key from a Telemet window to display an historic chart. . Type in the symbol and press **Enter**.

Select the zoom tool. Then hold down the right mouse button and box in the area for more detailed view of the price data.

Hold down the left mouse button and scroll through the chart. See day-to-day information - open, Hi, Lo, Last, Volume.



To see a chart on another company, type in the symbol and press **Enter**.

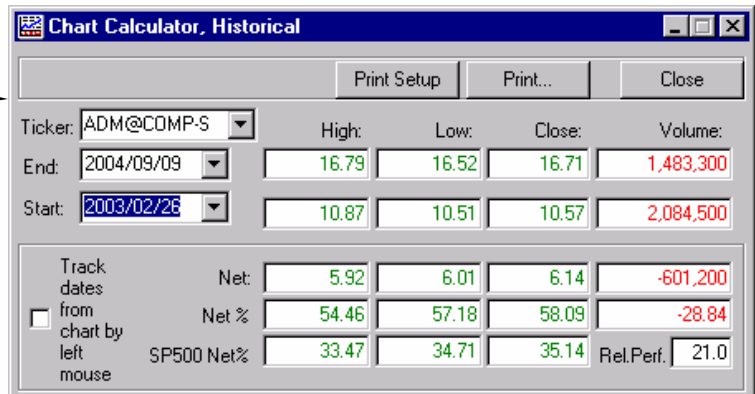
See weekly or monthly data quickly. Use the “|||” tool at the chart top , one is for weekly “ 2, 15” and one “J F M” is for monthly charts.

To display each day’s price data from an Historical Chart or the minute-by-minute price data from an Intraday chart, hold down the left mouse button within the center of the chart.

Hints:

To see **the change in price between any two dates** use the chart calculator. Press the ‘CALC’ tool at the top of the chart and select the dates from the pull down window which appears.

Select the two dates for the performance. See the Net, Net percent and a comparison to the sp500



To see a **table of historic prices and trade volumes** – daily, weekly or monthly. Press the ‘DATA’ tool. See a window with these data. Select a date range and print and export these data. Just select the appropriate buttons.

Other hints: See p/e, sales, dividend or eps overlays on historical charts. See splits (select Options, then Splits) and insider buys and sells (select Options, then Insiders). See TipSheet 13.

Other hints: See any of over 30 studies such as moving averages, money flow, Bomar bands. Select options then either upper or lower indicators. See TipSheet 14.

Other hints: See charts on U.S. GDP and other economic indicators, use USGDP-I for GDP. Call your client service representative for a full list of economic indicators.

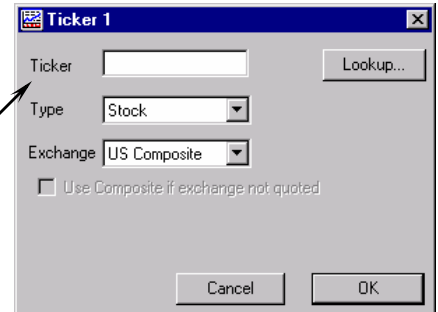
✍ Compare price action for two or more companies on the same chart.

✍ Compare Price Histories for two companies: Choose the menu item **Display / Chart / Historic / Ticker vrs Ticker**.

Enter the first ticker symbol and press **ENTER**. Enter the second ticker symbol and press **ENTER**.

Select menu **Display / Chart / Historic / Ticker vrs Ticker**

Enter the ticker symbol and press **ENTER**. Enter the second symbol and press **ENTER** again.



✍ Compare prices from a certain past date. Notice on the chart a small triangle at the bottom. A black arrow ▲ along the horizontal axis shows the Normalized date. (drag this arrow symbol on the chart to use a different date).

A black arrow ▲ along the horizontal axis shows the Normalized date

Grab the ▲ symbol and drag it to a new position along the horizontal axis to Normalize the symbols to a different date.



✍ **Compare price action with revenue, income, p/e or dividend history.**

✍ Compare Price History to Sales for two companies; Set up a chart (See TipSheet 12).

✍ Choose the “QV” tool at the top of the chart. See the stock price history to the revenue history for the company.

✍ Choose the “PE” tool at the top of the chart. See the stock price history to the P/E history for the company.

Select the “QV” tool to see sales compared to the price.

QU is the sales tool
 DI is the dividend tool
 IN is the income tool
 PE is the p/e tool



Compare Price to Sales, Income, p/e or dividend history

Hint 1: See stock split dates and ratios. Use Menu item *Options_Show Stock Splits*

Hint 2: See insider trading on the chart with *Options_Show Insider*.

Over 30 popular technical studies update in real-time.

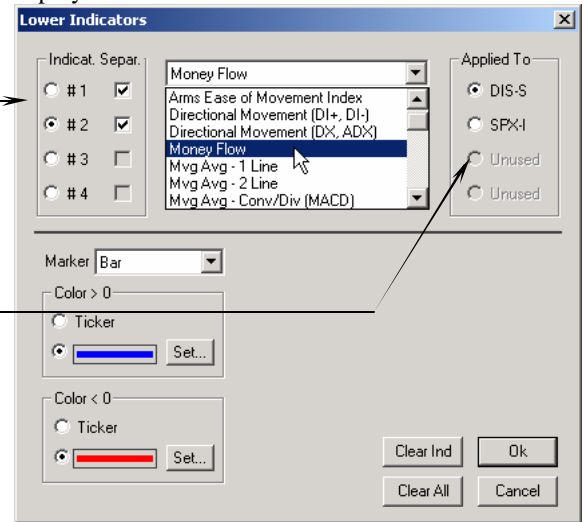
These studies include one and two line moving averages, directional movements, envelop and Bollinger bands, Bomar bands, Advance/Decline indicators, volatility, relative strength, arms movement, etc. Some studies show on the price area of the chart, some as a separate graphic at the bottom of the chart, thus the titles “upper” indicators and “lower” indicators respectively.

Use the Upper Indicator tool  or the Lower Indicator tool . Alternatively, select the menu **Options / Upper Indicators** or **Options / Lower Indicators**.

Chart more than one indicator by selecting the appropriate **Indicator** number to display in the chart.

Chart more than one indicator - select **Indicator** numbers to see indicators in separate sections by clicking on the **Separ** check box.

Apply an indicator to a symbol by selecting the symbol in the **Applied To** field.



Apply an indicator to a symbol by selecting the symbol in the **Applied To** field.


Click on the **OK** button in the lower right of the screen. See the indicator on the price chart. Plot a lower indicator in separate sections in the chart display rather than have them overlaid by clicking on the **Separ** checkbox when selecting the indicator.

Upper indicators chart here


Lower indicators chart here & on lines below this one

Legends appear here - select **Options_Legend_Display**



Quick Study places upper and lower indicators into the chart. Click on the Quick Study tool .

✍ Intraday charts show 1, 2, 5, or 15 minute data for up to 5 days. Supply & Demand charts show a histogram of volume at each price for up to 5 days.

✍ Click on the Intraday Chart tool - , or the Supply & Demand Chart tool - .

Or

Choose **Display / Charts / Intraday** or **Supply & Demand / Snap...** from a Telemet window. Type in the symbol, press **Enter**.

Or

Press the **F7 (Intraday Chart)** or **F9 (Supply & Demand Chart)** key to display the chart.

Select the zoom tool. Then hold down the right mouse button and box in the area for more detailed view of the price data.

Hold down the left mouse button and scroll through the chart. See text readout of minute-by-minute information of Open, Hi, Lo, Last, Volume.

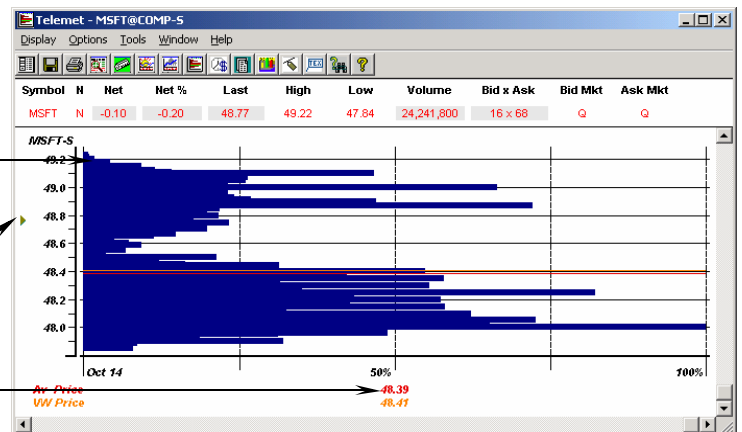


Intraday chart

Press the right mouse button on any bar to see all the trades at that price.

See the latest bid and offer on the left edge of the chart.

See the average price and the volume weighted average price



Intraday chart shows every trade at each price

✍ To see data on another symbol, type in the symbol and press **Enter**.


✍ Zooming in or out. Use the scroll bar at right to zoom in and out. Use the scroll bar at bottom to change the date range.

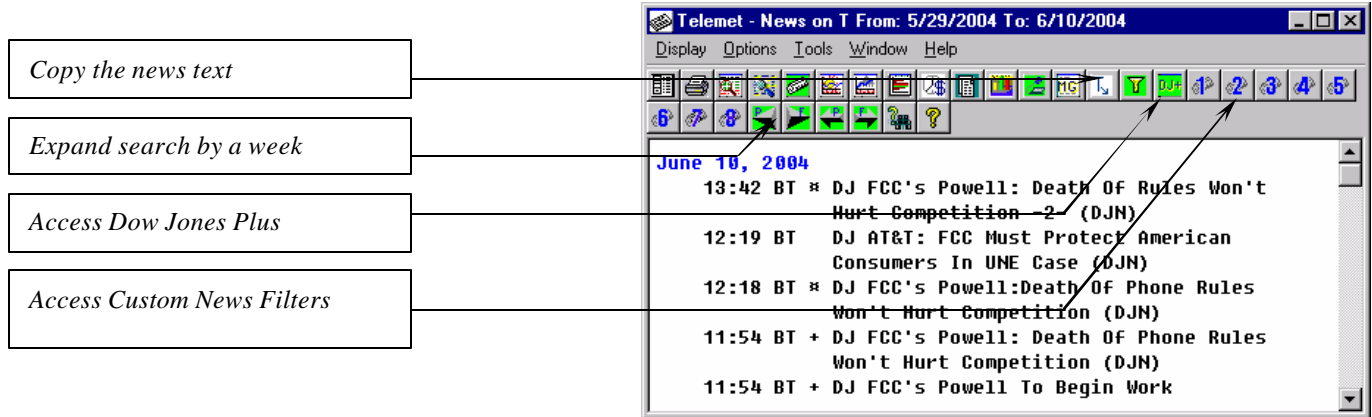
✍ To display minute-by-minute price data from an Intraday chart, hold down the **left** mouse button within the center of the chart.


Other hints: See over 30 studies such as moving averages, money flow, Bomar bands. Select options then either upper or lower indicators.

See news on any one company using “Snap News”. See news on a ticker list or subject, country, region, or state using Scrolling News. Pop-up alerts show news the moment it is reported.

Access news from Dow Jones, PR News and/or MarketScope (depending upon your subscription). Some Dow Jones Business News Headlines are bundled into the value-packed Telemet base level.

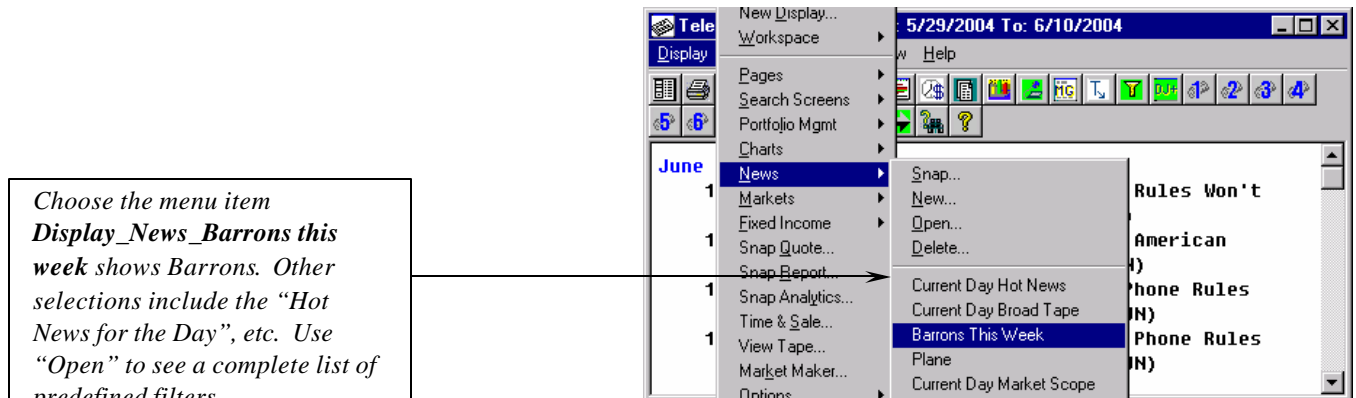
Snap news: select **Display / News / Snap**. Type in the ticker symbol and press **ENTER**. To see another symbol type in the symbol. If you are in most Telemet windows, to see Snap News press the tool . In a custom price window, click a ticker symbol, then press the **F6** key.




A starburst  or + next to a News headline means there is text behind the headline. To see the text double click on the headline.


To see Scrolling news, select **Display / News / Current Day Broadtape** (or PR News, etc). Clearly a lot of news crosses the Broadtape. See subsets of this news using the Predefined Filters.

Predefined Filters: To see “Hot News”, select **Display / News / Current Day Hot News**. Other Predefined Filters are on this menu item, or use “Open” to see a list of filters.



When all the news is shown in the window, **OK** appears at the top of your NEWS window. After reviewing the news, click on the tool . This marks the stories as reviewed. The text changes color. As new stories arrive they will have a different color.

Quickly see news on any portfolio or focus list; see news on any Ticker list on your platform.

Click on the **New Display** tool  from a Telemet window to open a new window. From this window choose **News / New...**

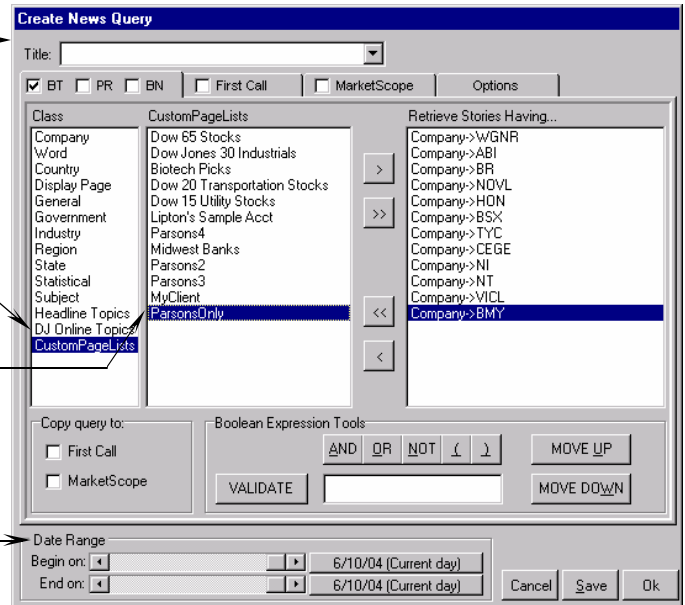
Follow the five steps shown below.

1. Give the Query a Title.

2. Click on Custom Page Lists

3. Select the ticker list, a copy goes to the **Retrieve** section.

4. Select the number of days and/or date range for the news recall.

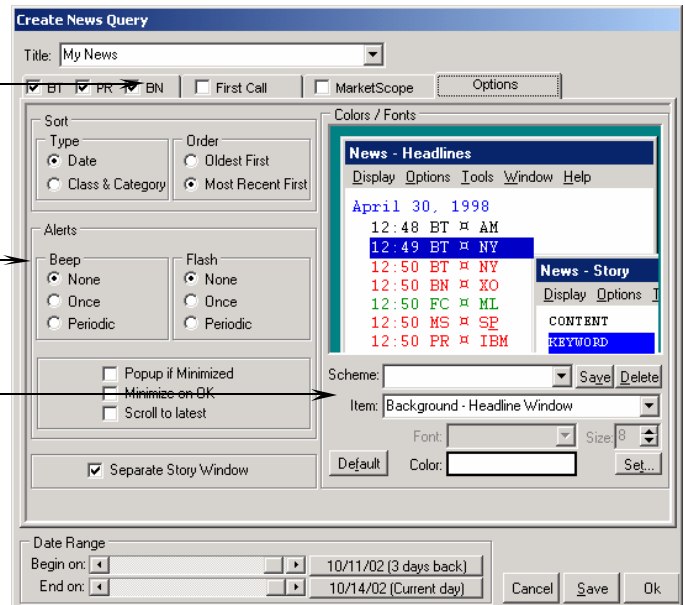


Set alerts, fonts and color scheme - use the "Options tab".

Use the Options Tab to select your favorite fonts and color scheme.


Make a beep or flash when a new article arrives with these buttons.

Select the color schema here

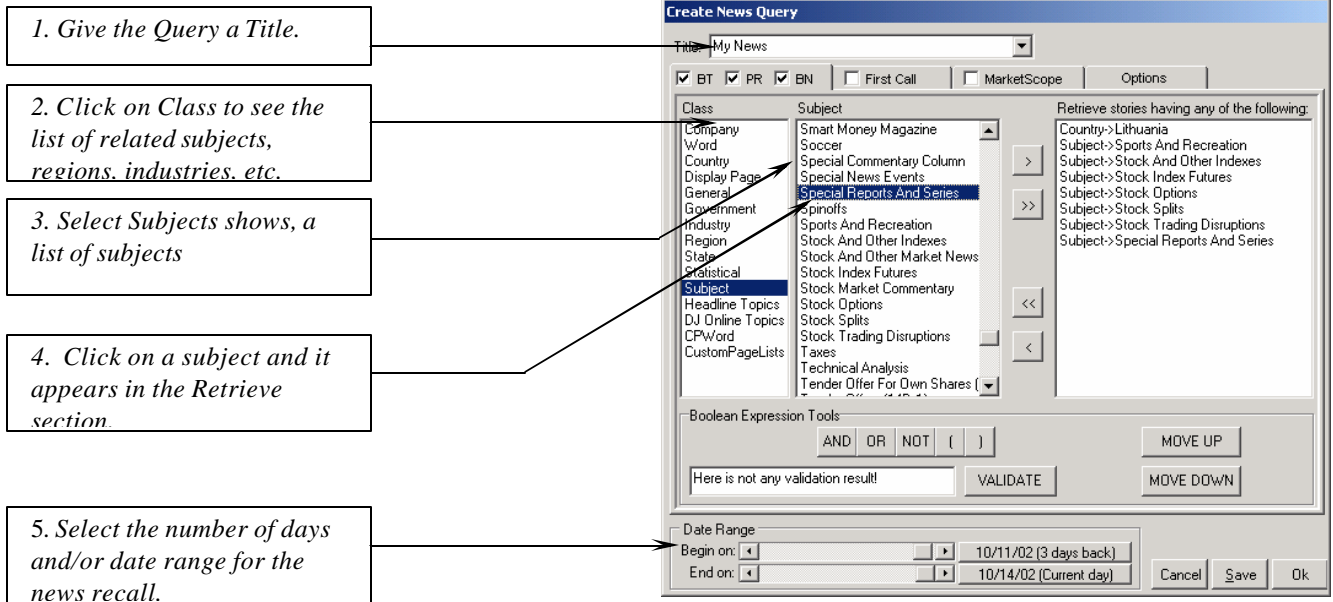


Press the **Save** button when finished. To see the window again choose **Display / News / Open...** and then select the query title you entered on step 1 above.

Advanced news searches combine words, subjects, regions.

Click on the **New Display** tool  from a Telemet window to open a new window. From this window choose **News / New...**

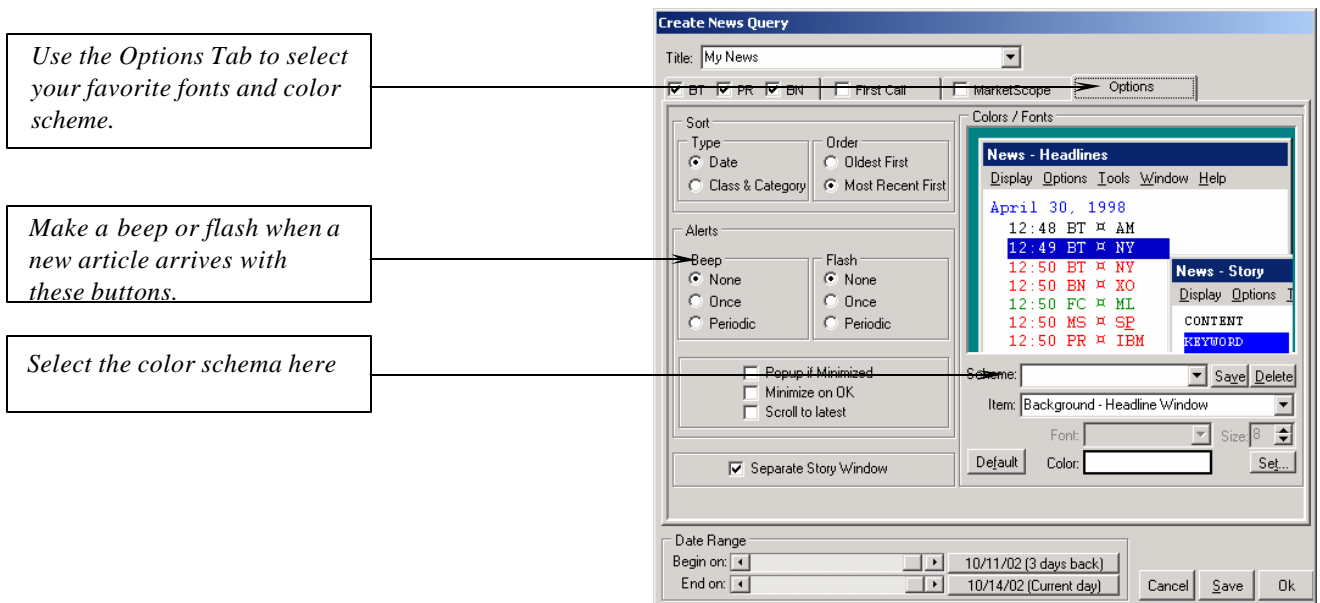
Follow the five steps shown below.



The screenshot shows the 'Create News Query' dialog box with the following callouts:

1. Give the Query a Title. (Points to the Title field)
2. Click on Class to see the list of related subjects, regions, industries, etc. (Points to the Class list)
3. Select Subjects shows, a list of subjects (Points to the Subject list)
4. Click on a subject and it appears in the Retrieve section. (Points to the 'Special Reports And Series' subject in the Subject list)
5. Select the number of days and/or date range for the news recall. (Points to the Date Range section)

Set alerts, fonts and color scheme - use the "Options tab".



The screenshot shows the 'Options' tab of the 'Create News Query' dialog box with the following callouts:

- Use the Options Tab to select your favorite fonts and color scheme. (Points to the Colors / Fonts section)
- Make a beep or flash when a new article arrives with these buttons. (Points to the Beep and Flash sections)
- Select the color schema here (Points to the Scheme dropdown menu)

Press the **Save** button when finished. To see the window again choose **Display / News / Open...** and then select the query title you gave in step 1 above.

Hint: Combine subjects, words and regions together to narrow searches. Use the "AND", "NOT" and OR buttons on the Create News Query window.

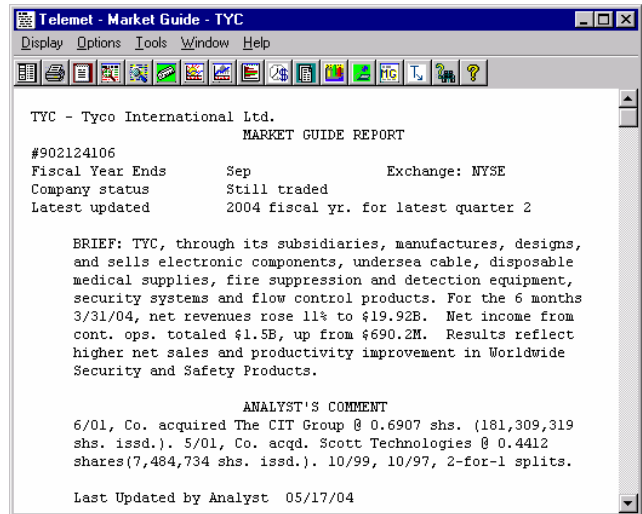
✍ **Fingertip access to balance sheets/income statements, cash flows, 10Ks and 10Qs. Get alerts on new dividends, newly filed 10Ks and 10Qs, and corporate actions.**

✍ Choose **Display / Research / Market Guide** to see Market Guide. Enter a symbol then press **Enter**.

✍ Market Guide gives daily updates of balance sheets, cash flows and income statements for over 10,000 companies. There are two years of Balance Sheets and cash flows and five years of income statements. Other data include an investor contact and phone number, a summary of capital structure, names of directors, company description and key ratios.

See a brief overview of the company.

Key ratios, followed by other data



✍ See dividend alerts, SEC 10K/Q alerts, Corporate Action Alerts on Custom Price Pages. Double click on the column and the alert details will pop up. For example double click on the Edgar Alert shows the 10Q filing that triggered the alert.

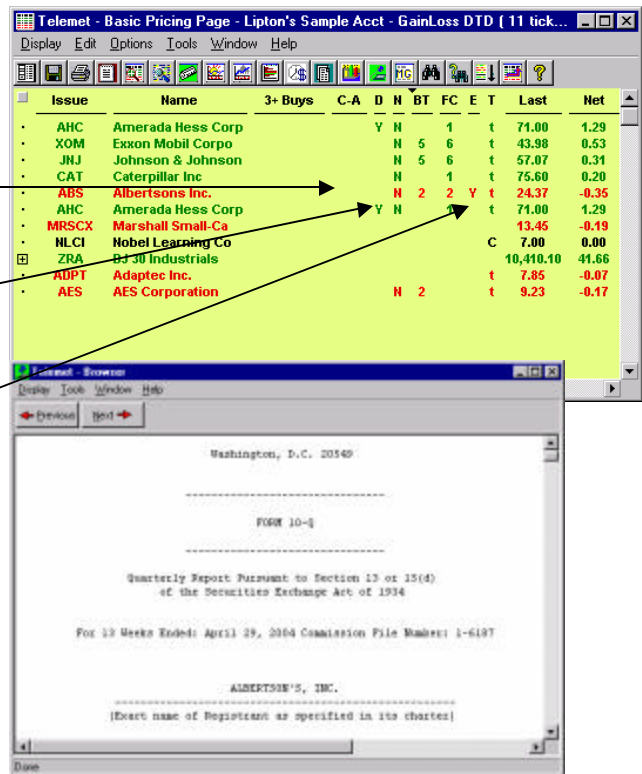
Double click on the data drills down to more information, just like it does with news alerts.

Alert columns show Corporate Actions and Insider trades. Double click on the C-A data area to see the details.

An alert column shows a dividend announcement, double click to see the details

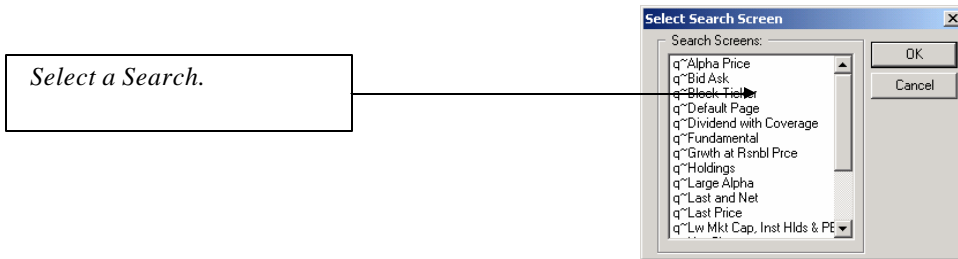
Edgar Filings (10K and 10Qs) Double click on the Edgar Alert area and see the Edgar Filing

The 10K and 10Qs can be printed or read on the screen.



✍ **Search and screen the equity universe. Identify securities with high yields, low p/e, growth at a reasonable price or any other criteria. Pre-defined searches are included. Create your own search.**

✍ Predefined Searches. Choose **Display / Search Screens / Open** from a Telemet window. See the “Select Search Screen” window. Select a Search. Each Search returns a securities list meeting the criteria.



✍ Create a new search. Select menu item **Display_Search Screens_New**. An edit box pops up, give the query a title and click on **OK**.

Create the search by selecting a pattern from the list box. Then fill in the query.

Select a search parameter, click on the line shows a list of data items to search.

Select a comparison, use the default “equal” or click on this to see comparisons, eg. “greater

Key in a value for the comparison. This can be another data item, a value, or a math relationship among data items and values

Combine searches with AND and OR Statements

After creating the query, click on **OK**. The query runs and gives results. Narrow the query or change it with the tool bar item

Save the results as a ticker list for later study or review. Select the menu item “Options_Save Current Search as a List”

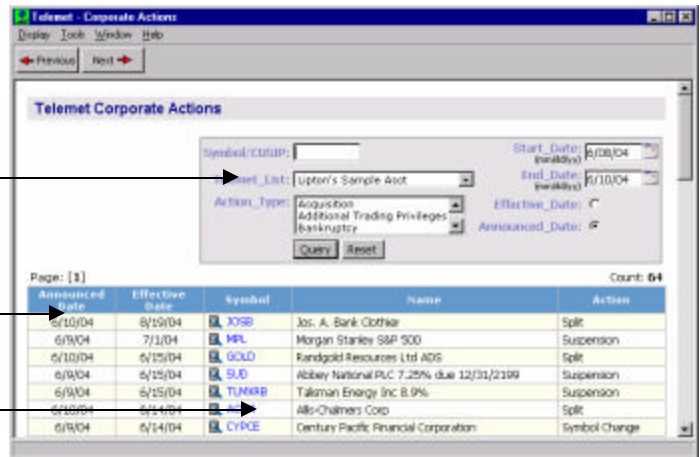
Narrow or widen the query with this tool.

Issue	Name	N	Last	High 360	Net
SEB	Seaboard Corpora	N	419.00	399.95	19.95 4.76%
Y	Alleghany Corpor		276.00	272.00	4.50 1.66%
PRK	Park Natl Corp O		124.00	123.45	0.74 0.60%
GD	General Dynamics	N	98.80	98.78	0.50 0.51%
QCOM	Qualcomm Inc.	N	69.86	69.54	1.40 2.04%
CFC	Countrywide Fina	N	69.15	68.84	2.22 3.32%
NUE	Nucor Corporatio	N	67.90	67.50	2.27 3.46%

Corporate actions include acquisitions, bankruptcy, redemptions, name changes, deletions, IPOs prospectuses, spin-offs, tenders and distributions. Dividend and Split historical data are also available.

Corporate Actions. Choose Display / Research / Corporate Action from a Telemet window. See a list of actions for the day. The announcement date, the effective date, symbol, company name and type action are shown. Drill down on the symbol for more information about an action.

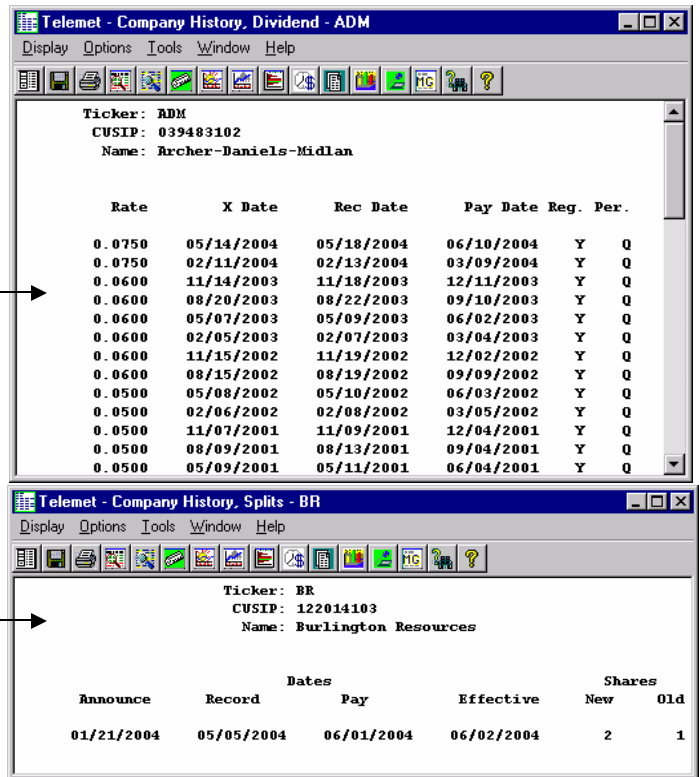
- Search by symbol, ticker list, dates and action types
- See the announcement date, effective date, symbol, name and action type.
- Drill down for more information, double click on the ticker symbol.



Get Alerts on corporate actions with the "Corporate Action alert column" on a custom page (See TipSheet 19)

Histories of Splits, Dividends. Select menu item Display / Research / Company History.... Select either Dividends, Splits or Sales.

- Select Display / Research / Company History / Dividend. Type in a ticker symbol.
- See a dividend history on the ticker. 5 to 12 years of dividend history are presented.
- Select Display / Research / Company History / Splits Type in a ticker symbol. This shows dates and splits on a company.

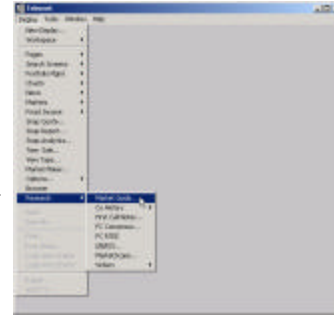




Telemet offers fingertip access to earnings estimates, sell side research/news and insider/institutional holdings.

Choose **Display / Research / ...** to see the third party research listings. These include First Call Notes, First Call Consensus, I/B/E/S Estimates, MarketScope and Vickers. Access is by subscription. Please call Telemet for further information.

Select **Display / Research / ...**
This shows third party services.
If "grayed out", access is not active on your system. Call Telemet to activate.



First Call Consensus Earnings and I/B/E/S both show street estimates of earnings for a company.

Telemet - FC Consensus - ADM@COMP

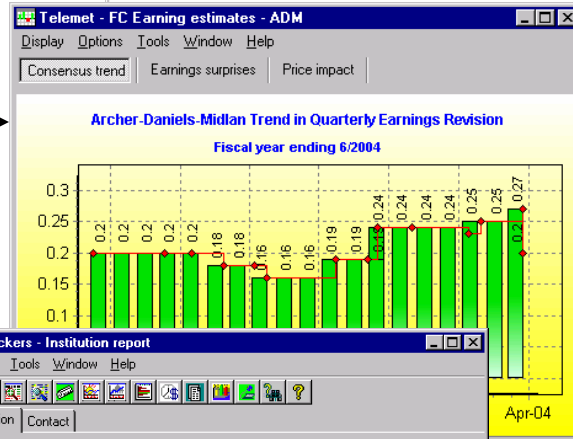
ADM

FIRST CALL CONSENSUS ESTIMATES

Archer Daniels Midland Co.
Cusip : 03948310 SIC : 2075 IndustryCode : FOA

PERIOD	REPORT	MEAN	MEDIAN	HIGH	LOW	STDDEV	YR.AGO
CURQTR(2)	01/30/04	0.37	0.26	0.33	0.24	0.03	0.18
(Actual)							
NEXTQTR	04/30/04	0.27	0.27	0.29	0.22	0.03	0.18
							0.68

First Call Consensus Earnings and I/B/E/S both show trends in the estimates, surprise history, and price impact.



Vickers shows a complete database of institutional holdings, contacts and insider trading.

Telemet - Vickers - Institution report

AIM Charter Fund

87 records reported on 2004-02-29

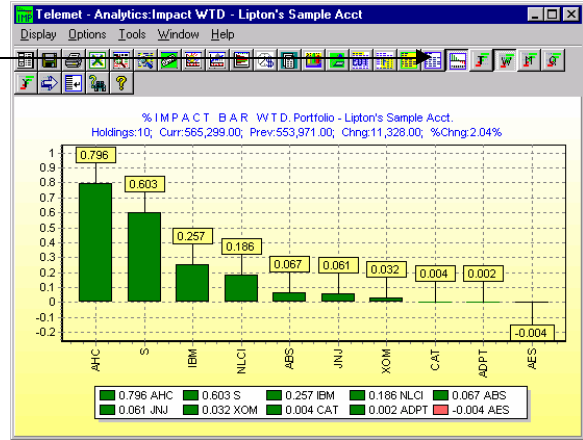
Security	Institution	Contact			
Ticker	CUSIP	Issuer	Curr. holding	Curr. date	Prev. holding
ABT	002824100	ABBOTT LABS	790,000	2004-02-29	790,000
ACE	G0070K103	ACE LTD	1,025,000	2004-02-29	1,025,000
ACL	H01301102	ALCON INC	705,000	2004-02-29	865,000
ADI	032654105	ANALOG DEVICES INC	0	2004-02-29	0
ADP	053015103	AUTOMATIC DATA PROCESSI	1,355,000	2004-02-29	1,355,000



See the impact each position in a portfolio has on the overall value of the portfolio. See this in either tabular or graphic format for any trading day, or for the past week, month, quarter or year.

Choose **Display / Portfolio Mgmt / Impact...** to see the dollar weighted impact of prices on any account. A sample account "Lipton" is included with your software. Select "Lipton" when prompted. Positions for the impact analyses can be downloaded from major accounting systems on a daily basis or manually entered. Please call Telemet to arrange for a seamless download from your back office systems to Telemet.

Select **Display / Portfolio Mgmt / Impact...** Shows the impact of the value of each position on the portfolio overall value.



Tabular and graphic views are available by selecting the proper tool at the top of the window

See day to date, week to date, month to date, quarter to date and year to date using the tools at the top of the window.

Ticker	Net_ %	%Impact
AHC	1.28	0.7960
S	9.24	0.6032
IBM	3.31	0.2565
NLCI	3.09	0.1857
ABS	1.58	0.0672
JNJ	1.22	0.0610
XOM	1.41	0.0324
CAT	0.13	0.0035
ADPT	0.26	0.0018
AES	-0.43	-0.0035

Holdings:	10	Curr:	565,299.00	Prev:	553,971.00	Chng:	11,328.00	2.04%
-----------	----	-------	------------	-------	------------	-------	-----------	-------

Print the report for client, management or record keeping purposes.

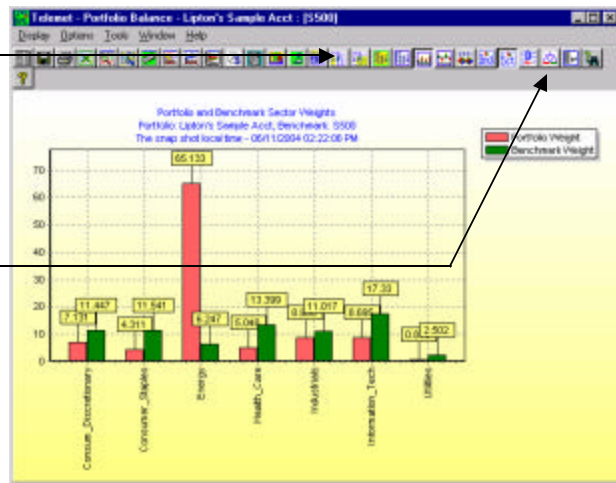
See a portfolio's balance compared to a benchmark. See this in either tabular or graphic format for any trading day. Select rebalance objectives and see suggested buys and sells.

Choose **Display / Portfolio Mgmt / Balance...** to see a tabular or graphic display of the account compared to a benchmark. A sample account "Lipton" is included with your software. Select "Lipton" when prompted. Positions and cost basis for balance analyses are downloaded from major accounting systems on a daily basis. Please call Telemet to arrange for a seamless download from your back office systems to Telemet.

Select **Display / Portfolio Mgmt / Balance..** See each position, its purchase value, its market value, weighting at purchase price, weighting at the current market price and compare these weightings to the weightings of a benchmark.

SECTOR	Share	PortOrigVal	PortMktVal	PortOrigWgt%	PortMktWgt%	BenchWgt%
SECTOR: Consumer Staples						
EXHSTRT: Food_S_Burg_Retail						
SHR	1000	22,888.80	24,379.88	4.94	4.31	9.89
EXR Totals	1000	22,888.80	24,379.88	4.94	4.31	9.89
SECT Totals	1000	22,888.80	24,379.88	4.94	4.31	11.54
SECTOR: Energy						
EXHSTRT: Oil_S_Ear						
SHR	5000	262,888.80	348,194.88	58.84	45.33	6.84
EXR Totals	5000	262,888.80	348,194.88	58.84	45.33	6.84
SECT Totals	5000	262,888.80	348,194.88	58.84	45.33	6.25

See results in tabular or, in graphic form. See Sectors or industries using the tools at the top of the window.



Select the balance tool.

See a window with selected strategies and approaches to rebalancing.

Rebalance Portfolio - Lipton's Sample Acc(\$500)

Selected Task: **Rebalance the current portfolio to a benchmark or model**

Conditions: 100 Shares 1 Share Portfolio MV

Sectors/Industries: Sector Level Ind. in Sector Stocks in Ind.

Use Digital: Digital Benchmark Buy Sell Buy/Sell Rebalance Model Cancel

See the suggested trades to rebalance the portfolio

#	Sector	CUSIP	Exposure	Target	Current Price	Bid/Ask	\$ Value
1	S	812307108	buy	1500	48.35	ask	60,452.00
2	ABS	812307104	buy	1500	24.37	ask	36,555.00
3	AHC	822951104	sell	3900	71.08	bid	276,980.00
4	ADM	302215102	sell	280	43.98	bid	12,316.00
5	AM	478191104	buy	780	57.07	ask	44,548.00
6	MLG	854891104	buy	7300	7.00	ask	51,108.00
7	CAI	149121108	buy	380	75.88	ask	28,688.00
8	ADPT	809211108	buy	780	7.05	ask	5,495.00
9	BW	450321108	buy	780	86.46	ask	67,322.00
10	AES	802091108	buy	780	5.23	ask	4,081.00
Total							321.08



See performance attribution compared to a benchmark. See this in either tabular or graphic format for any trading day. Select single quarter or multiple quarters for an historical perspective.

Choose **Display / Portfolio Mgmt / Holdings...** to see a tabular display of the account's day to date, week to date, month to date, quarter to date and year to date valuations. A sample account "Lipton" is included with the software. Select "Lipton" when prompted. Positions for the holdings page are downloaded from major accounting systems on a daily basis or can be manually entered. Please call Telemet to arrange for a seamless download from your back office systems to Telemet.

Select **Display / Portfolio Mgmt / Holdings..** See each position, its market value, the gain or loss for the day, week, month, quarter and year.

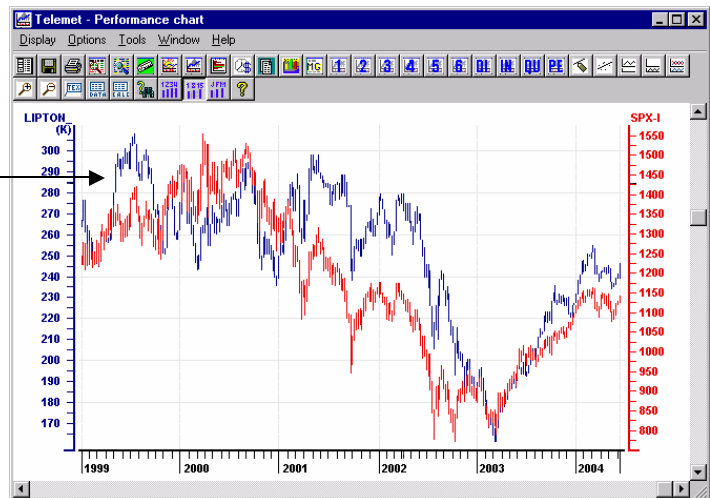
Totals for the portfolio are at the bottom of the window

Issue	Name	Last	Mkt Value	GL STD	GL WTD	GL MTD	GL QTD	GL YTD
JNJ	Johansen & Johnson	57.87	29,535.00	0.00	309.88	688.88	3,175.89	2,705.88
CAT	Caterpillar Inc	75.68	15,128.00	0.00	29.80	50.80	-94.00	-1,404.00
AES	AES Corporation	9.23	8,955.89	0.00	-29.80	-56.80	350.00	-185.89
ABC	Amerada Hess Corporat	71.06	25,568.00	0.00	-88.88	285.89	2,883.89	8,315.00
AES	Albertsons Inc.	24.32	24,316.00	0.00	388.88	948.88	2,529.89	5,720.00
S	Sears Roebuck Co	48.31	48,316.00	0.00	3,416.00	2,316.00	-2,858.00	-5,188.00
BM	BM Corp	86.48	86,238.00	0.00	1,486.00	835.88	-890.00	-1,118.00
DIS	Walt Disney Company	24.72	35,888.00	0.00	1,850.00	1,800.00	68.00	8,500.00
HLI	Hobart Learning Commitm	7.89	7,890.00	0.00	0.00	0.00	0.00	0.00
ZNA	DJ 30 Industrials	48,416.18	48,416.18	0.00	0.00	0.00	0.00	0.00
ABC	Amerada Hess Corporat	71.06	71,060.00	0.00	0.00	0.00	0.00	0.00
MSCX	Marshall Small-Cap Grow	13.66	13,660.00	0.00	0.00	0.00	0.00	0.00
AMP	Adaptive Inc.	7.85	7,850.00	0.00	0.00	0.00	0.00	0.00
XOM	Exxon Mobil Corporat	43.98	43,980.00	0.00	0.00	0.00	0.00	0.00
			246,719.88	0.00	7,270.00	8,709.00	4,893.00	13,960.00

Choose **Display / Portfolio Mgmt / Performance Chart...** to see a chart of the account's price performance compared to a benchmark. A sample account "Lipton" is included with the software. Select "Lipton" when prompted.

Select **Display / Portfolio Mgmt / Performance Chart..**

See the chart of the history of the value of the portfolio compared to the history of the value of a benchmark.





See performance attribution compared to a benchmark. See this in either tabular or graphic format for any trading day. Select single quarter or multiple quarters for an historical perspective.

Choose **Display / Portfolio Mgmt / Holdings...** to see a tabular display of the account's day to date, week to date, month to date, quarter to date and year to date valuations. A sample account "Lipton" is included with the software. Select "Lipton" when prompted. Positions for the holdings page are downloaded from major accounting systems on a daily basis or can be manually entered. Please call Telemet to arrange for a seamless download from your back office systems to Telemet.

Select **Display / Portfolio Mgmt / Holdings..** See each position, its market value, the gain or loss for the day, week, month, quarter and year.

Totals for the portfolio are at the bottom of the window

Ticker	Name	Last	Mkt Value	GL STD	GL WTD	GL MTD	GL QTD	GL YTD
JNJ	Johansen & Johnson	57.87	29,535.00	0.00	309.00	688.00	3,175.00	2,705.00
CAT	Caterpillar Inc	75.68	15,128.00	0.00	29.00	50.00	-94.00	-1,404.00
AES	AES Corporation	9.23	8,955.00	0.00	-29.00	-50.00	350.00	-185.00
ABC	Amerada Hess Corporat	71.06	25,508.00	0.00	-84.00	285.00	2,803.00	8,315.00
AES	Albertsons Inc.	24.32	24,316.00	0.00	308.00	508.00	2,529.00	5,720.00
S	Sears Roebuck Co	48.31	-40,318.00	0.00	3,410.00	2,310.00	-2,850.00	-5,100.00
BM	BM Corp	96.08	-8,238.00	0.00	1,400.00	835.00	-890.00	-1,118.00
DIS	Walt Disney Company	24.72	35,000.00	0.00	1,850.00	1,800.00	68.00	8,500.00
HLI	Holmet Learning Commitm	7.89	10,416.10					
ZNA	DJ 30 Industrials	71.06						
ABC	Amerada Hess Corporat	71.06						
MSCX	Marshall Small-Cap Grow	13.66						
AMP	Adaptive Inc.	7.85	3,825.00	0.00	98.00	175.00	465.00	-895.00
XOM	Exxon Mobil Corporat	43.90	13,104.00	0.00	103.00	218.00	717.00	894.00
			246,719.00	0.00	7,270.00	6,709.00	4,893.00	13,900.00

Choose **Display / Portfolio Mgmt / Performance Chart...** to see a chart of the account's price performance compared to a benchmark. A sample account "Lipton" is included with the software. Select "Lipton" when prompted.

Select **Display / Portfolio Mgmt / Performance Chart..**

See the chart of the history of the value of the portfolio compared to the history of the value of a benchmark.

